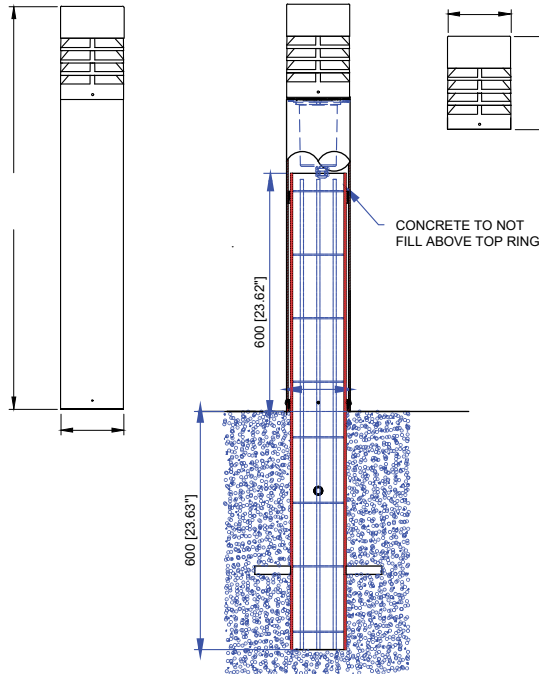


PRODUCT DRAWING (DIMENSIONS)



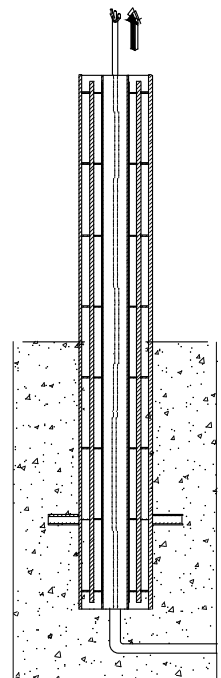
SUITABLE FOR WET LOCATIONS

NOTE

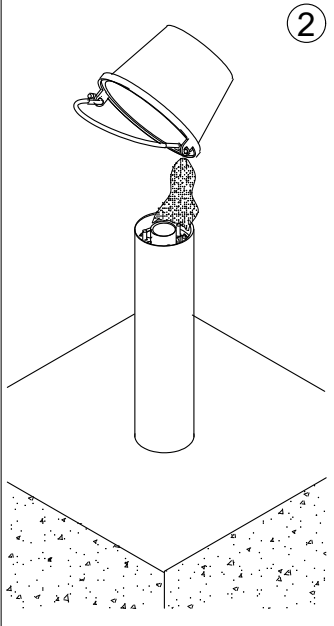
Ground densities vary from site to site. Ligman highly recommends consulting engineers familiar with the building site conditions to establish proper concrete foundation. It is the engineers responsibility to ensure that the foundation is suitable for the bollard application

(Ligman is not responsible for inadequate foundation failure, the above suggestion with the soil conditions on site)

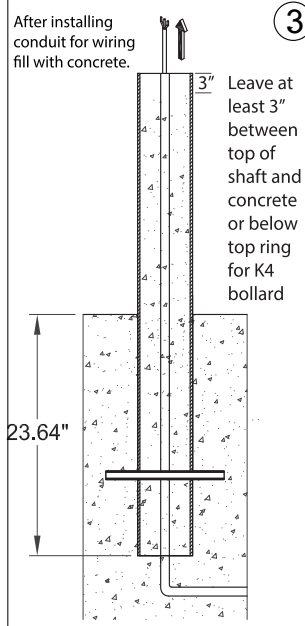
1



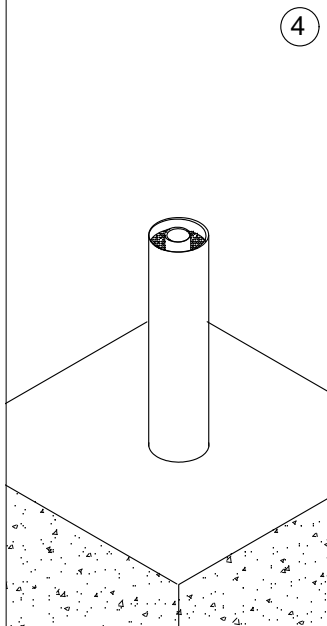
2



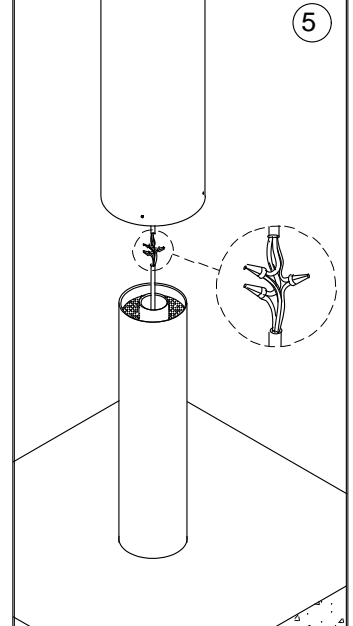
3



4



5



Notice to Installer

Wiring Instruction ⚠ Warning:

- Risk of Fire and Electrical Shock, This fixture must be installed only by a qualified electrician, Installation must adhere to the National Electrical Code (NEC) and all applicable local and federal regulations.
- Always disconnect power before servicing the fixture.

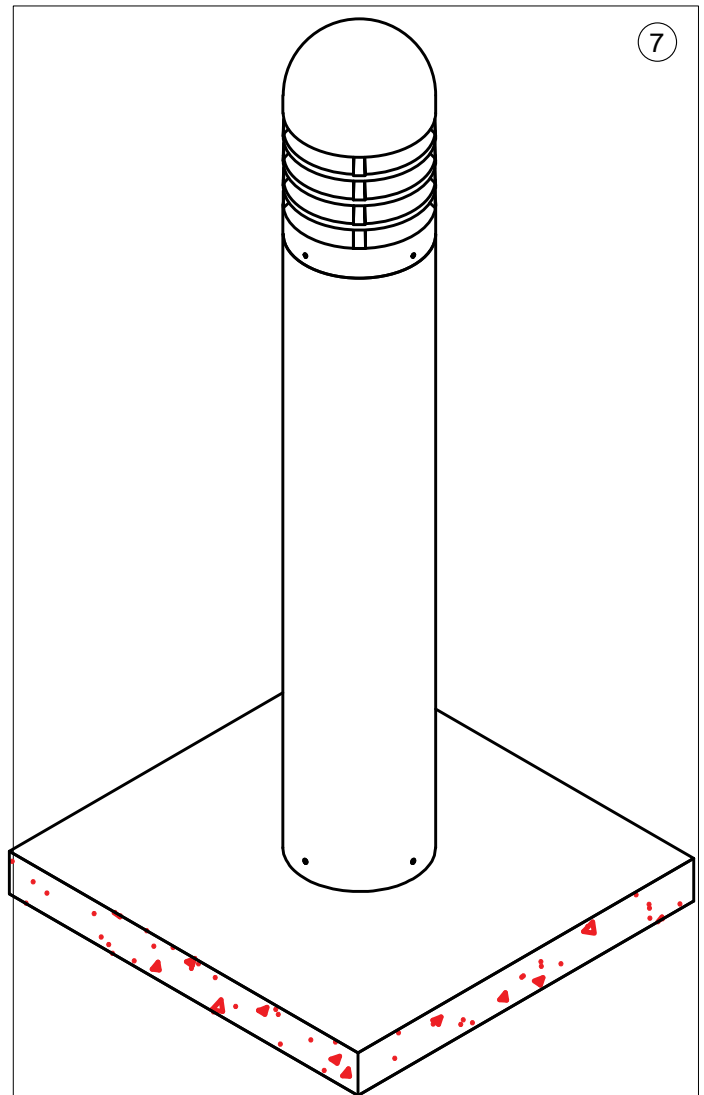
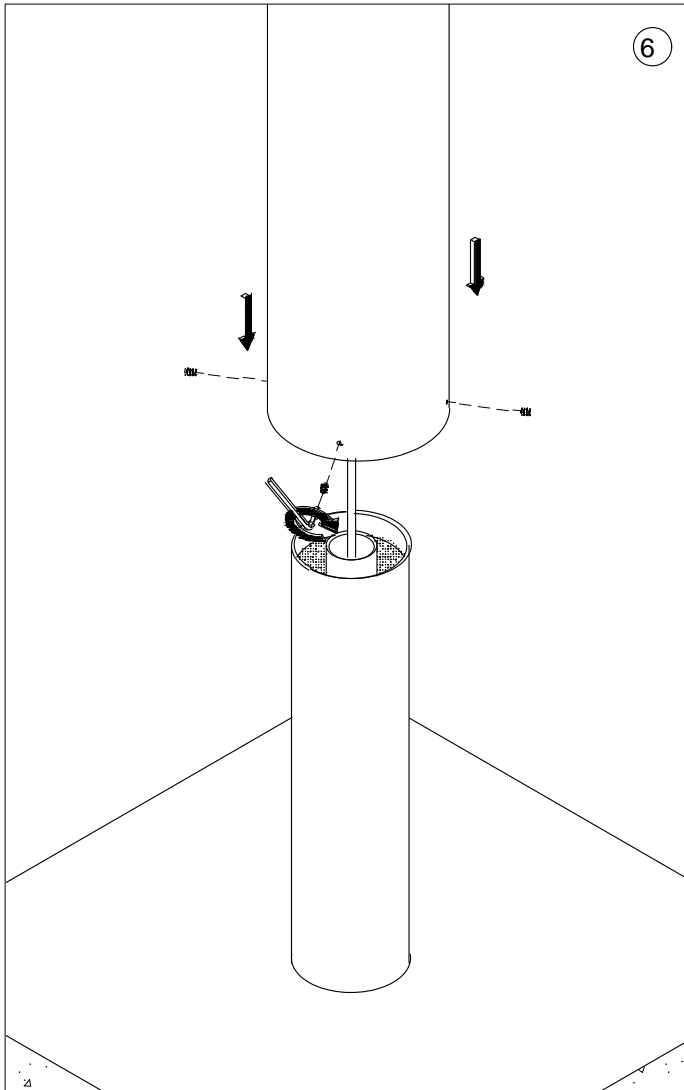
Ligman Lighting USA

7144 NE Progress Court, Hillsboro
Oregon, 97124, USA
Tel : 503 645 0500

INSTALLATION AND SERVICE MANUAL

LIGMAN
LIGHTING USA

: cf' bghU`Uhcb'cZ'7 cbWtfX'6 c``UYX' @8
AcXY`"I 7 B!%\$& (+!G6



Notice to Installer

Wiring Instruction ⚠ Warning:

- Risk of Fire and Electrical Shock, This fixture must be installed only by a qualified electrician, Installation must adhere to the National Electrical Code (NEC) and all applicable local and federal regulations.
- Always disconnect power before servicing the fixture.

Ligman Lighting USA

7144 NE Progress Court, Hillsboro
Oregon, 97124, USA
Tel : 503 645 0500

www.ligmanlightingusa.com

UCN-10247-SB-K4